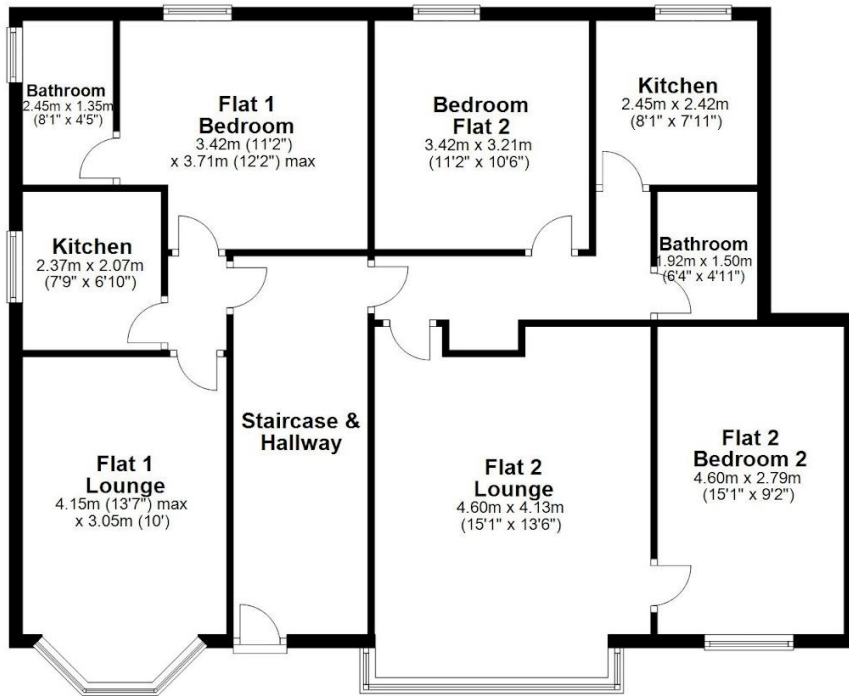


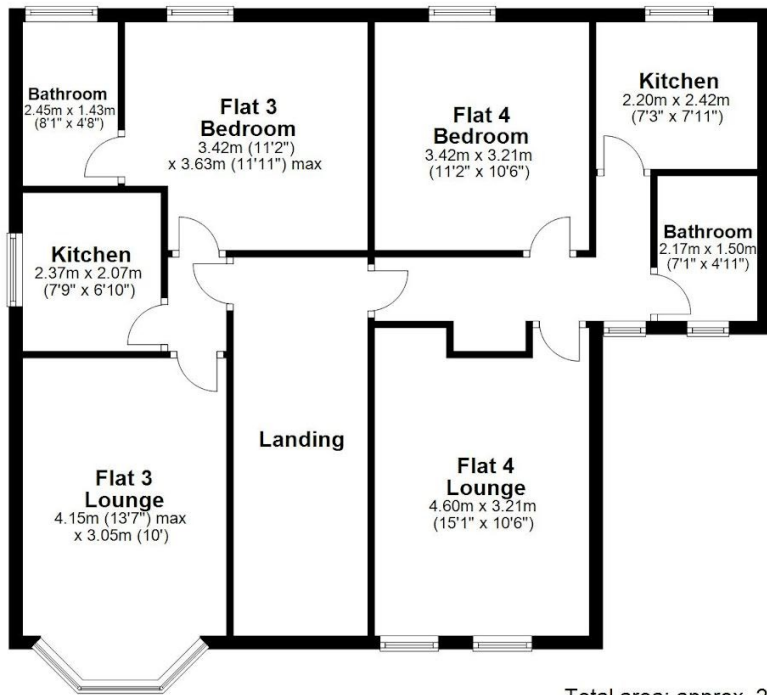
### Ground Floor

Approx. 108.2 sq. metres (1164.7 sq. feet)



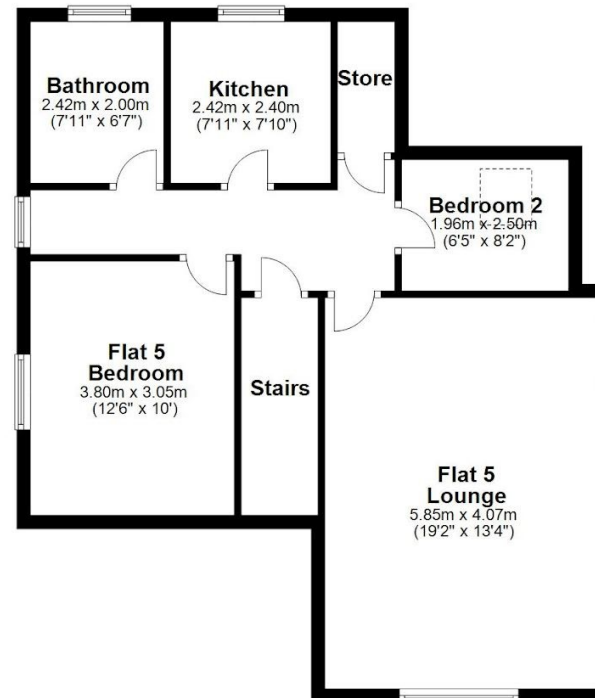
### First Floor

Approx. 89.3 sq. metres (961.5 sq. feet)



### Second Floor

Approx. 66.0 sq. metres (709.9 sq. feet)



Total area: approx. 263.5 sq. metres (2836.2 sq. feet)

This floor plan is not to scale and is for illustration/marketing purposes only.